

## **School Profile 学校概况**

### **Introduction to UK Academy of Chinese Medicine (UACM) & Our Partner Shanghai University of TCM (SHUTCM)**

#### **1. History and Development of UK Academy of Chinese Medicine (UACM )**

Established in 2012 , it is an academic institution of Traditional Chinese Medicine (TCM) affiliated with UK ACADEMY OF CHINESE MEDICINE LTD (UK Company house no.8296872; the type of business : other education ) with aims of promoting the education and development of TCM and acupuncture , enhancing its clinical efficiency and academic research in the UK and Europe. UACM tries its best to provide best teaching courses for students and supplies most efficient treatments for patients with acupuncture, herbs and massage. Our current partner is Shanghai University of TCM.

Teaching methods: include face-to-face teaching in clinic or classroom, online teaching, and clinical practices.

Teaching languages: English, Chinese, and Turkish.

#### **2. UACM Offers the Following Courses**

##### **(1) The Single-subject training courses (since 2012)**

Massage course - 6 months ;

Acupuncture and massage course - 1year;

Herbal medicine and herbal formula course - 1year ;

Acupuncture and herbal medicine & formula course - 2 years;

Basic theory, diagnosis, acupuncture, herbal medicine & formula course clinical course - 3 years;

Classics of TCM course - 1 year.

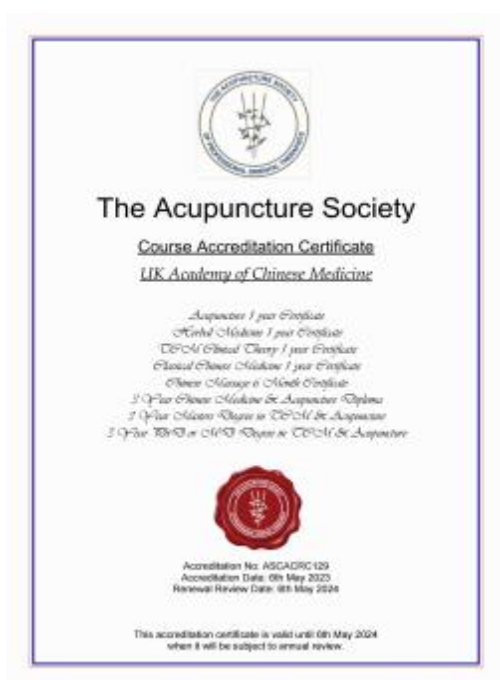
##### **(2) Postgraduate program (since 2013)**

Including 3 years of master's course, and 3 years of doctoral course in TCM & acupuncture, in association with Shanghai University of TCM (SHUTCM ), etc.

##### **(3) The undergraduate course 3 years (in planning)**

### 3. The Existing Accreditation

All the courses are accreditation by The Acupuncture Society:



Since all the courses have been accredited by The Acupuncture Society, therefore, most graduates have become members of The Acupuncture Society; some of them joined FTCM or ATCM and the British Acupuncture Council.

### 4.The Teaching Team

Principal / Headteacher (full time) : Prof. Engin Can ( Enqin Zhang)



In 1972 , he started systematically studying TCM at Shandong TCM College as an undergraduate; from 1976 to 1978 continued for Western medicine in Shandong Loudi Medical College ; in 1979 joined the training course of the [Shang Han Lun] (Treatise on Febrile Disease ) & Jin Kui Yao Lue (Synopsis of the Golden Chamber) for young teachers of all-China TCM universities at Helongjiang University of TCM . In September 1979 , he passed the postgraduate entrance examination and became a postgraduate, under his tutor Prof. Li Keshao, and continued further 3 years of studying & researching in [Shang Han Lun ] at Shandong University of TCM, and in September 1982 graduated with master degree in TCM, and later also got MD in alternative medicine. From 1985 to 1992 he worked as a lecturer in TCM & [Shang Han Lun] and became director of the Advanced Study department of Shandong University of TCM; also practised in the Affiliated Hospital. He has written and published a number of TCM textbooks , such as the world 's first English-Chinese bilingual TCM series [ A Practical English-Chinese Library of TCM] composed of 14 books; [Research in Classical Prescriptions of TCM], [Shang Han Lun Study Guide] , and the latest nine-volume- [Textbooks of UK Academy of Chinese Medicine]. He has made great contribution in the comprehensive and systematic education of TCM to the West. In 1991 he received the Outstanding Contribution Award by the Academic Degree Committee of Chinese State Council. Currently he is the director of UACM; a professor (specially invited ) of Shaaxi University of Chinese Medicine , and the visiting professor of Shanghai University of TCM; a fellow & full member of ATCM, and senior member of The Royal Society of Medicine.

Teachers ( part time ) :  
Prof Xin Lu



Graduated from Bethune Medical University in 1983. Engaged in the treatment and teaching of integrated traditional Chinese and Western medicine. Published dozens of relevant academic papers.

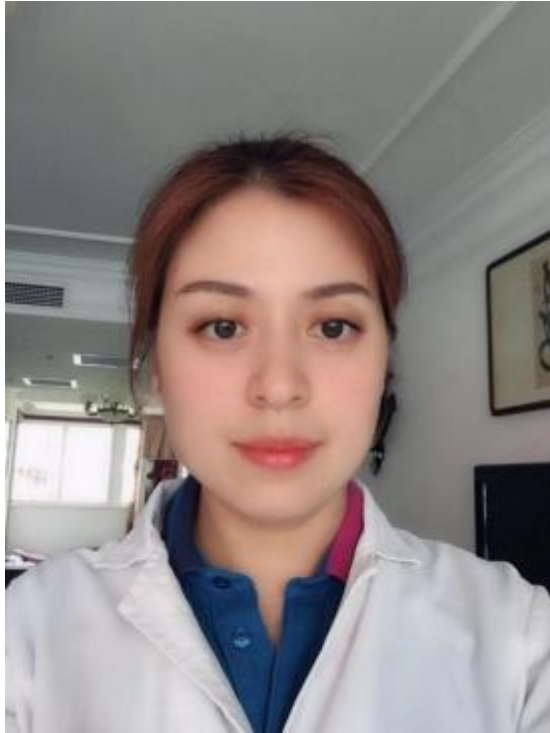
He came to the UK In 1994, is good at treating gynaecological, dermatological and neurological diseases, achieved remarkable curative effect. Currently is the executive chairman of the World Traditional Medicine Forum.

Dr. Changai Sun, associate professor in TCM & acupuncture , MD in TCM.



Born in a family of TCM practitioner, she studied 3 years of TCM at Hunan University of TCM and graduated with MD in TCM in 2017. Before that, she also got a master degree in physical education from Shanghai Physical Institute in 2006; and a master degree in rehabilitation from The University of Leuven, Belgium in 2007. She once worked in Berlin for patients with sequelae of stroke at the Parkinson's Rehabilitation Hospital and Irish Ren'ai TCM Hospital. She is now teaching basic theory of TCM, acupuncture, rehabilitation, Chinese sports, Tai Chi, Qigong, etc. She is a full member of ATCM.

Dr. Dongmei Wang, associate professor in TCM Gynaecology, Master in TCM gynaecology.



She studied Traditional Chinese Medicine (TCM ) in Xinjiang Medical University from 2004 to 2009 and graduated with a Bachelor Degree in 2009. In the same year, she passed the postgraduate entrance examination of Shandong University of TCM and then continued a further 3 years of clinical practice and research under her tutor, Prof Zhe Wang, a well-known expert in Chinese medicine . Finally, she completed her postgraduate course and obtained her Master Degree in TCM gynaecology. After graduation, Dr Wang worked at the TCM Maternal and Child Health Hospital of Linzi District, Shandong Province, China, between 2012 and 2015. She has successfully treated many patients suffering from chronic gastrointestinal diseases as well as difficult cases of gynecological conditions with Chinese medicine and acupuncture. Therefore she was highly praised by her patients. Dr Wang started to practise in the UK at the end of 2015. She is currently a full member of ATCM UK, an Associate Professor and consultant of UK Academy of Chinese Medicine , responsible for theoretical and clinical teaching on Chinese medicine and acupuncture. Dr Wang is a specialist in diagnosis and treatment of gynecological diseases. A full member of TCM.

Dr Linyue Zheng , associate professor in TCM , MD in TCM



She studied TCM for MD at Zhejiang Chinese Medical University for 3 years, graduated with MD in 2011 ; before that, she also studied TCM in Hubei Yichang College of Medicine 1990-1994; as well as studied Western medicine at Hubei Sanxia Medical University 1995-2002. A member of The Acupuncture Society.

Dr Angela Humphreys , associate professor in TCM , MD in TCM



She studied 3 years of postgraduate for masters, 2014-2017, and got masters in TCM from Hunan University of TCM ; then continued 3 years of doctoral course in TCM at Zhejiang Chinese Medical University, 2017-2020, and got MD in TCM . She is now teaching acupuncture , TCM basic theories , diagnostics and clinical theory and practice. She is a member of FTCM .

Dr Yu-ping Liu , associate professor in Western medicine , and also practitioner in TCM and acupuncture.



She studied Western medicine in Capital Medical University 2003 - 2008, and got Bachelor degree of medicine . From 2015 to 2022, she served as attending physician of endocrinology in Xiamen Chang-Gung Hospital ; from 2017 to 2022 she served as the director of Nutrition Department of the hospital.

She teaches Western medicine including nutrition , anatomy and physiology , etiology and pathology , diagnostics , and acupuncture. She is a member of The Acupuncture Society .

Additionally, there are other par-time teachers , please look at our website: [www.uacm.co.uk](http://www.uacm.co.uk) / our team , English version.

## **5. Administrative Team**

Professor Engin Can , Director of UK Academy of Chinese Medicine Ltd. full time.

Mrs Ayla Can, manager, full time . Former chief of the finance and capital marketing department of the Arabic and Turkish Bank 1998-2007 .

Dr. Aylin Can, MD from Nottingham University , a junior doctor at Nottingham University Hospital, during the holidays to assist in organizing the teaching courses of Western medicine, part time.

Dr Darren Rose , an assistant to Director Professor Engin Can, part time, for public relations and communication. He is currently a doctoral student of Shanghai



University of TCM , and practitioner in acupuncture, and teacher in Kongfu at UK Academy of Chinese Medicine. A member of The Acupuncture Society.

## 6. Textbooks by Professor Engin Can ( Enqin Zhang)

(1) [A Practical English-Chinese Library of TCM] , by Prof Enqin Zhang (Engin Can) , composed of 14 books , the first kind of bilingual series textbooks in the world, published by the Publishing House of Shanghai University of TCM in 1990. For undergraduates and postgraduates .

See photo below:

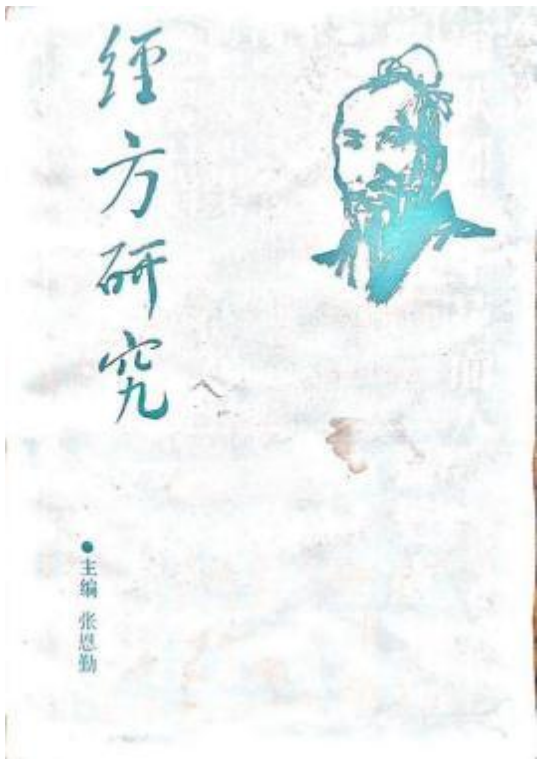


(2) A new series of textbooks for single-subject courses, undergraduates, postgraduates , etc. As following:

[Textbooks for UK Academy of Chinese Medicine], composed of 9 books , by Professor Engin Can ( Enqin Zhang) , for undergraduates and postgraduates. See photos as following:

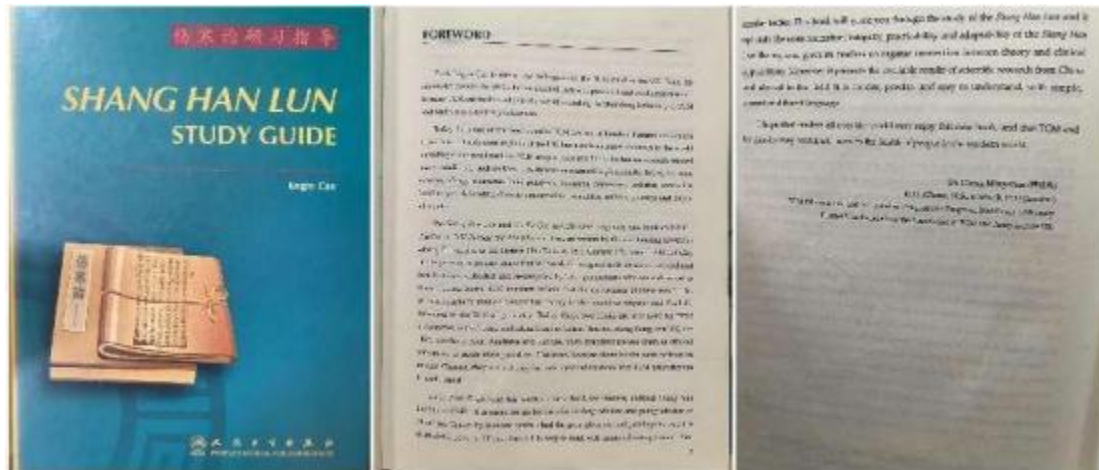


(3) [Research in Classical Formulas] (Chinese edition) by Professor Enqin Zhang (Engin CAN) , published by Yellow River Press in 1987 for postgraduates .  
 See photo below :

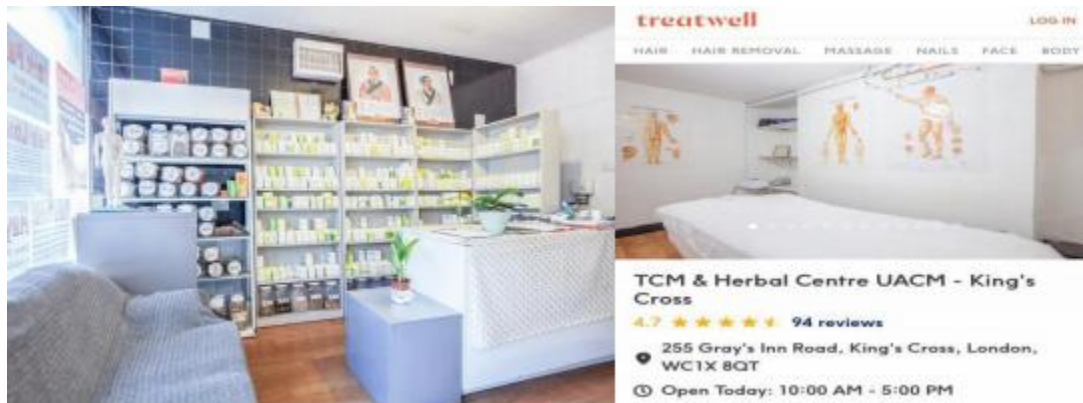


(4) [Shang Han Lun Study Guide] by Prof Engin Can ( English edition). It was the handout for postgraduates at Middlesex University , published by top Chinese state medical publisher 'People's Medical Publishing House' in 2012. A bestseller in the world mostly for undergraduates and postgraduates of universities and colleges of TCM.

See photos and its forward by Dr Cheng Min-zhao, former TCM principal lecturer and head of postgraduate program , Middlesex University.



## 7. Teaching Clinic - King's Cross TCM and Herbal Center UACM



'King's Cross TCM (Traditional Chinese Medicine) & Herbal Centre UACM ' is the affiliated clinic of UK Academy of Chinese Medicine. The clinic provides a full range of TCM therapies including acupuncture, herbal medicine, massage and cupping with high quality and low price.

The chief consultant is Professor Engin CAN (Enqin Zhang) , working along with other teachers who are part-time in UK Academy of Chinese Medicine, they practice here based on the appointment of patients. For example, Dr Dongmei Wang for gynecological patients; Dr Quiyuan Qiao , for orthopedic diseases . Generally, in the mornings we teach students and in the afternoon we treat patients as well as leading students to practice.

See the following photos of successful cases of infertility treated by Professor Engin Can with acupuncture and herbal medicine:



Opening hours: Monday to Sunday, 10 am to 5pm.

Clinic Address: 255 Gray's inn Road King's Cross, WC1X 8QT, London

Phone: 02035099050

Mobile phone & WhatsApp : 07846193488

Email: [prof.engincan@hotmail.co.uk](mailto:prof.engincan@hotmail.co.uk)

Website: [www.uacm.co.uk](http://www.uacm.co.uk)

Google: Treatwell King's Cross TCM and Herbal Centre UACM.

Nearest Tube Station: King's Cross St Pancras.

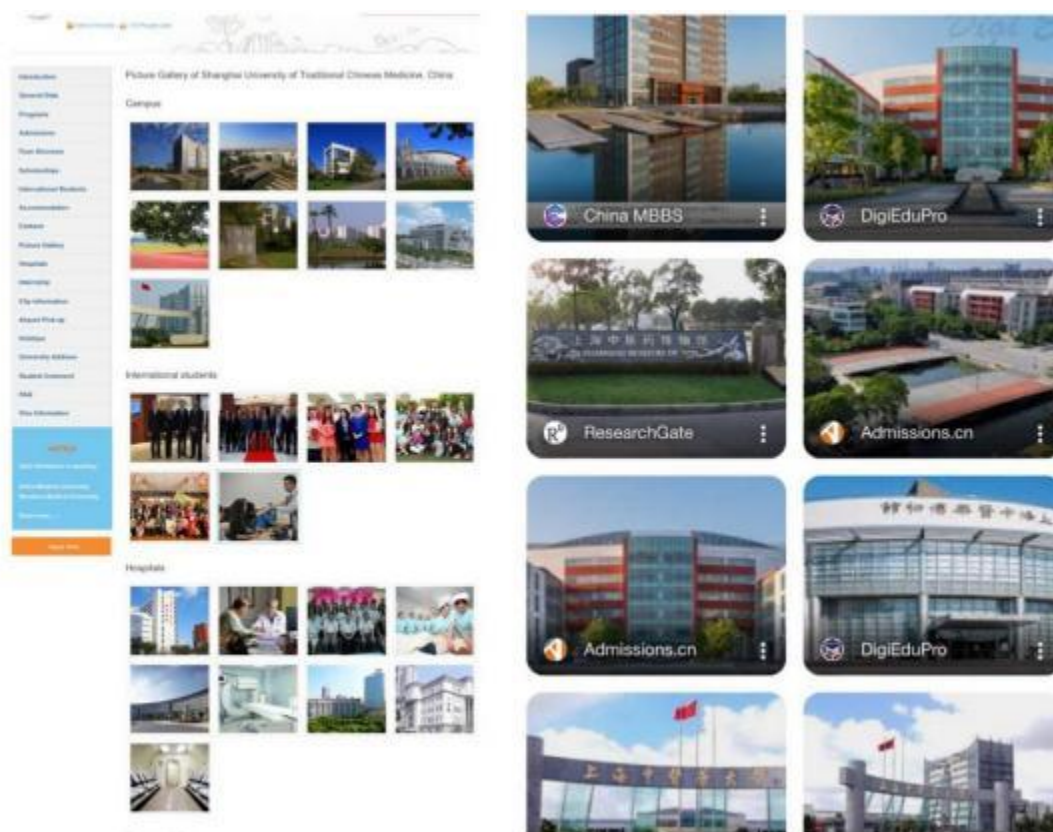
### **8.Classrooms (temporary lease) ; mostly teaching in teaching clinic)**

See photos :



## 9. About Our Partner-Shanghai University of Traditional Chinese Medicine (SHUTCM)

See the following photos of SHUTCM:



Shanghai University of Traditional Chinese Medicine, founded in 1956, is one of the firstly established four Colleges and Universities of Tradition Chinese Medicine after the People's Republic of China has founded. The University is located in Scientific Research and Education Zone, ZhangJiang High-tech Park, Pudong New Area. The campus which occupies 2775 units of area has beautiful environment and complete instructional facilities such as teaching buildings, experiment buildings, library building, administration building, external affairs building, gymnasium and museum. Presently, the number of students in the university is 7,301, including 507 students for doctoral programs, 1,942 students for master's programs, 3,574 students for undergraduate programs or higher vocational education, 194 students for continuing education, 1502 long-term students abroad and 1243 short-term international students study in there.

The university has established cooperation with 14 countries and areas. More than 1243 short-term students from over 30 countries and areas such as Japan, Korea, Russia, France, England, America, Germany and Italy come to the university per year. For nearly 50 years since the foundation, Shanghai University of Traditional Chinese Medicine has trained all kinds and grades of people with Traditional Chinese Medicine abilities for our country. The school fellows now are in over 60 countries and areas. The university has more than 700 specialists and professors, including 1 academicians of Chinese Academy of Engineering, 1 academicians of Chinese Academy of Sciences and many leaders of state key academic disciplines and famous herbalist doctors. The University now has 17 secondary schools and departments, 3 directly subordinate 3A hospitals, Shuguang Hospital, Longhua Hospital and Yueyang Hospital, 2 indirectly subordinate hospitals, Putuo Hospital and Shanghai Hospital of Traditional Chinese Medicine, 13 subordinate or joint academies, 8 research centers and 1 union of medicine, instruction and research combined of 17 institutions of Traditional Chinese Medicine. It has 3 bases of Ministry of Education of the People's Republic of China, Base of Wushu Training for University Students, Base of Cultural Education for University Students and National Base of Science Elements Research and Instructional Specialists Training. The 3 doctoral

programs accredited by Level I academic disciplines, i.e. Traditional Chinese Medicine, Traditional Chinese Medicinal Materials and Combination of Traditional Chinese Medicine and Western Medicine are also research stations that offer postdoctoral programs. The University has 15 doctoral programs accredited by Level II academic disciplines, 30 master programs, 30 undergraduate and junior undergraduate programs and 9 academic disciplines of continuing education.

Shanghai University of Traditional Chinese Medicine and Shanghai Academy of Traditional Chinese Medicine which is one of the seven academies of Traditional Chinese Medicine in China share the same ground and stuff. The university now has 3 key academic disciplines of Ministry of Education of the People's Republic of China, i.e. Surgery of Traditional Chinese Medicine, Traditional Chinese Medicinal Materials and Internal Traditional Chinese Medicine, 1 key laboratory of Ministry of Education of the People's Republic of China, 4 key academic disciplines construction units of State Administration of Traditional Chinese Medicine of the People's Republic of China, 7 Shanghai key academic disciplines, 2 Shanghai E- Academies of universities, 3 key academic disciplines of Shanghai Education Committee 4th phase key academic disciplines, 1 Shanghai key laboratory and 14 third-class laboratories. The university now is striving for the aim that to be a high level, investigative-oriented and external-oriented university.